

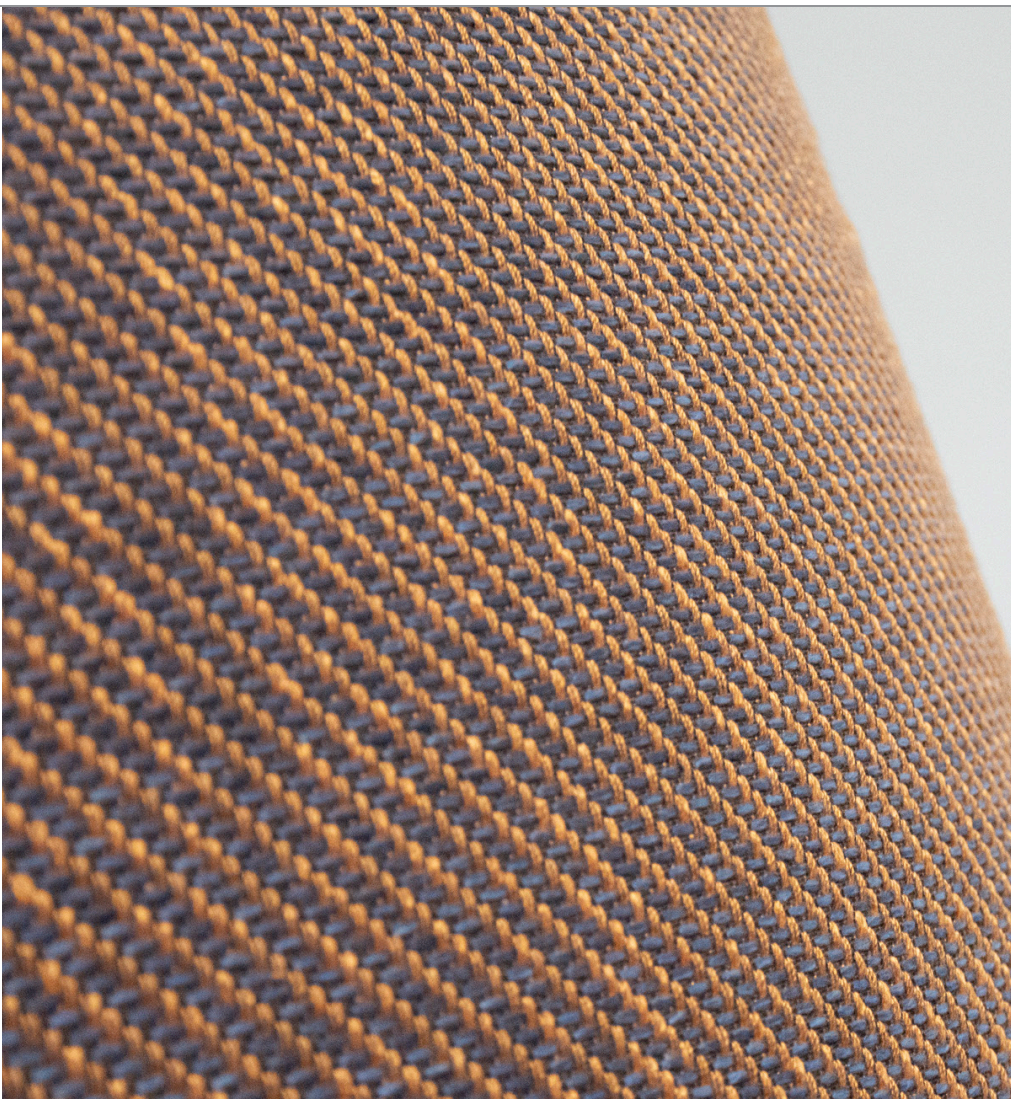
Puška puška  
*create happiness*



# SIDEWAY















# SIDEWAY

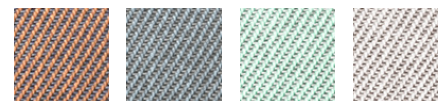
## Inspired by nature!

Sideway is a fabric woven in a non-traditional way in line with the most recent trends, which is why the material looks as if composed of several different shades. Sideway contains natural materials (cotton, flax), so the textile feels and looks pleasantly natural. The bean bags sewn from this material are for indoor use. It is a breathable material that has the OEKO-TEX® 100 certificate which confirms that this furniture tapestry meets the OEKO-TEX® international environmental standard. This means that the high-quality and dependable Sideway fabric is totally safe to use and is free of any toxic or allergenic materials. That's why it's great for kids.

### Technical information:

- |  |   |
|--|---|
|  Fabric – 25% cotton, 25% polyester, 25% polypropylene, 21% viscose, 4% flax. |  Lightfastness: 5/8                                      |
|  Weight: 432 g/m <sup>2</sup> g / m <sup>2</sup>                              |  No chemical substances (REACH conformity certification) |
|  Abrasion resistant: 30,000 (Martindale test)                                |  Certified fabric OEKO-TEX® 100                         |
|  Recommended cleaning: dry cleaning with tetrachlorethylene                 |  Breathable fabric                                     |

### Colours:



Bronze

Grey

Mint

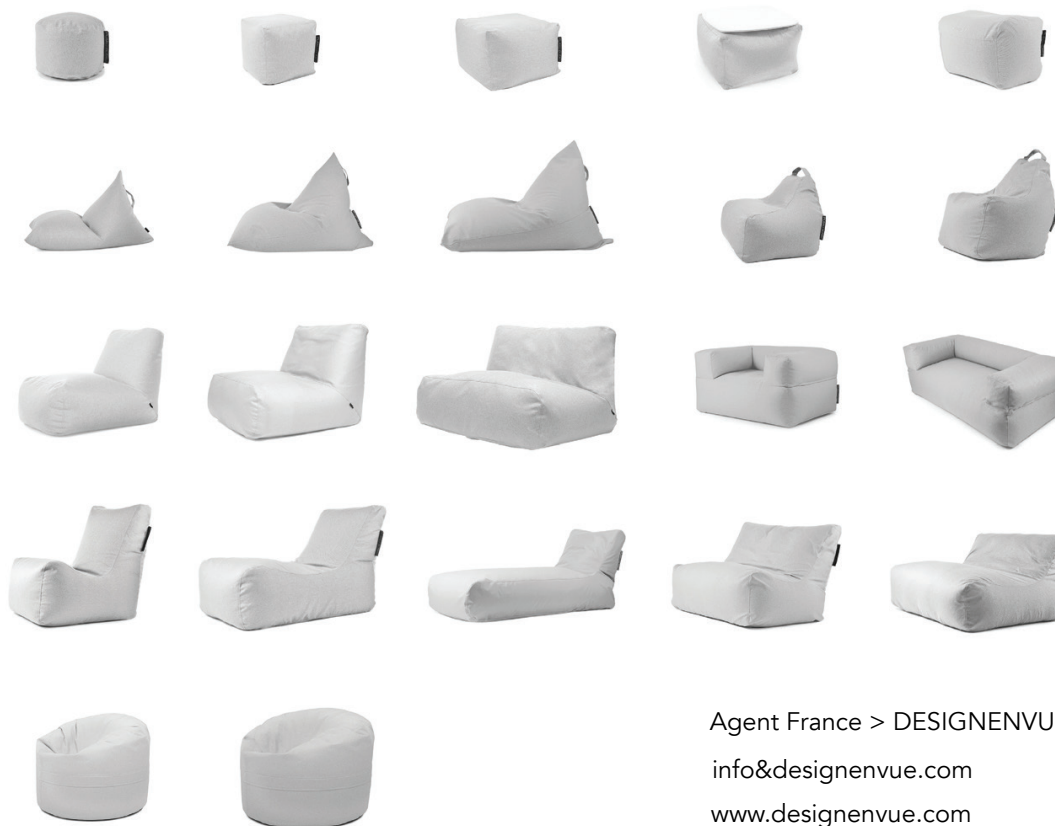
Silver





Seat/Mini Sideway Silver

## POSSIBLE BEAN BAG MODELS



Agent France > DESIGNENVUE

[info@designenvue.com](mailto:info@designenvue.com)

[www.designenvue.com](http://www.designenvue.com)