



round table 38



round table 60



table 62



table 78

charcoal: color code CG



black: color code BL



cloud: color code CW



leaf: color code LG



apple: color code AR



driftwood: color code DW



navy blue: color code NB

### What seating should you use?

All Fresh Air Tables have a corresponding bench to fit its length and a single seat bench for the ends.



### collection:

fresh air

### material:

100% recycled HDPE

product details: see backside



shipped knocked down some assembly required



sky: color code SB



sunset: color code OR





round table 38

seats 4

**SKU:** FA-RT38-(color code)

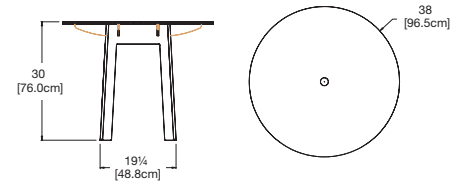
**dimensions:**  
width: 38" (96.5cm)  
depth: 38" (96.5cm)  
height: 30" (76.0cm)

**weight:**  
48.5 lbs (22.0kg)

**use with:**  
fresh air bench 18



**388**  
reclaimed  
milk jugs



**shipping dimensions:** 48" x 6" x 39"  
**shipping weight:** 64.5 lbs (29.3kg)



round table 60

seats 6

**SKU:** FA-RT60-(color code)

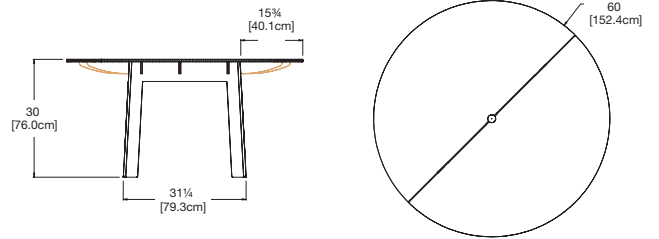
**dimensions:**  
width: 60" (152.4cm)  
depth: 60" (152.4cm)  
height: 30" (76.0cm)

**weight:**  
103 lbs (46.7kg)

**use with:**  
fresh air bench 18



**824**  
reclaimed  
milk jugs



**shipping dimensions:** Pallet



table 62

seats 6

**SKU:** FA-T62-(color code)

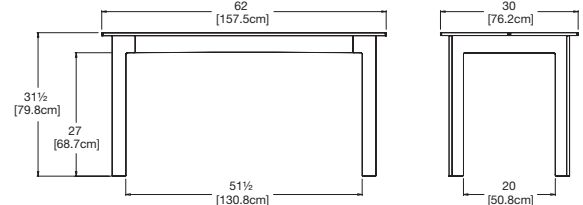
**dimensions:**  
width: 62" (157.5cm)  
depth: 30" (76.2cm)  
height: 31.5" (79.8cm)

**weight:**  
83 lbs (37.6kg)

**use with:**  
fresh air bench 48



**664**  
reclaimed  
milk jugs



**shipping dimensions:** Pallet



table 78

seats 8

**SKU:** FA-T72-(color code)

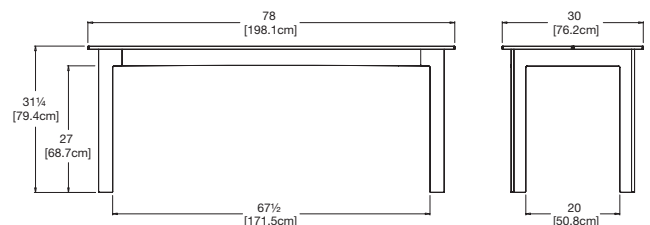
**dimensions:**  
width: 78" (198.1cm)  
depth: 30" (76.2cm)  
height: 31.25" (79.4cm)

**weight:**  
95 lbs (43.1kg)

**use with:**  
fresh air bench 65



**760**  
reclaimed  
milk jugs



**shipping dimensions:** Pallet



**charcoal:** FA-ADA4040-CG



**black:** FA-ADA4040-BL



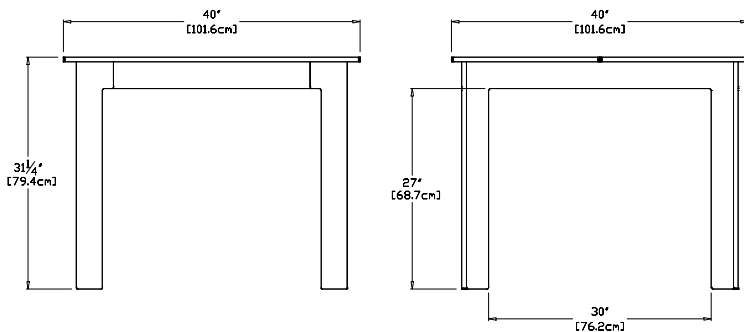
**cloud:** FA-ADA4040-CW



**leaf:** FA-ADA4040-LG



**apple red:** FA-ADA4040-AR



**driftwood:** FA-ADA4040-DW



**navy blue:** FA-ADA4040-NB



**sky:** FA-ADA4040-SB



**sunset:** FA-ADA4040-OR

**collection:** fresh air  
**material:** 100% recycled HDPE  
**dimensions:** width: 40" (101.6cm)  
 depth: 40" (101.6cm)  
 height: 31.25" (79.4cm)  
**weight:** 70 lbs (31.8 kg)



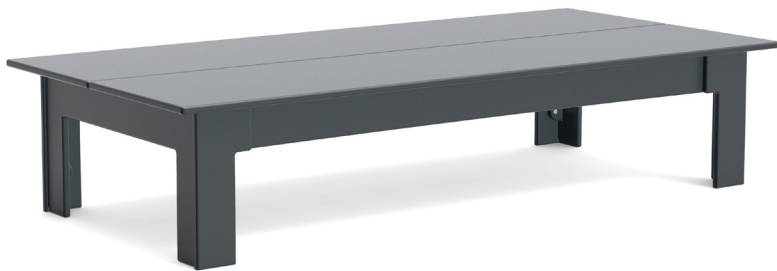
**560**  
reclaimed  
milk jugs

**shipping dimensions:** 48" x 6" x 48"  
**shipping weight:** 92 lbs (41.7kg)

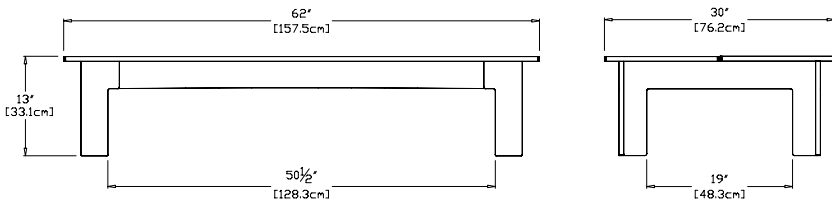


shipped knocked down  
some assembly required





**charcoal:** FA-CT62-CG



**black:** FA-CT62-BL



**cloud:** FA-CT62-CW



**leaf:** FA-CT62-LG



**apple red:** FA-CT62-AR



**driftwood:** FA-CT62-DW



**navy blue:** FA-CT62-NB



**sky:** FA-CT62-SB



**sunset:** FA-CT62-OR

**collection:** fresh air  
**material:** 100% recycled HDPE  
**dimensions:** width: 62" (157.5cm)  
 depth: 30" (76.2cm)  
 height: 13" (33.1cm)  
**weight:**



made from  
reclaimed  
milk jugs

**shipping dimensions:**  
**shipping weight:**



shipped knocked down  
some assembly required

